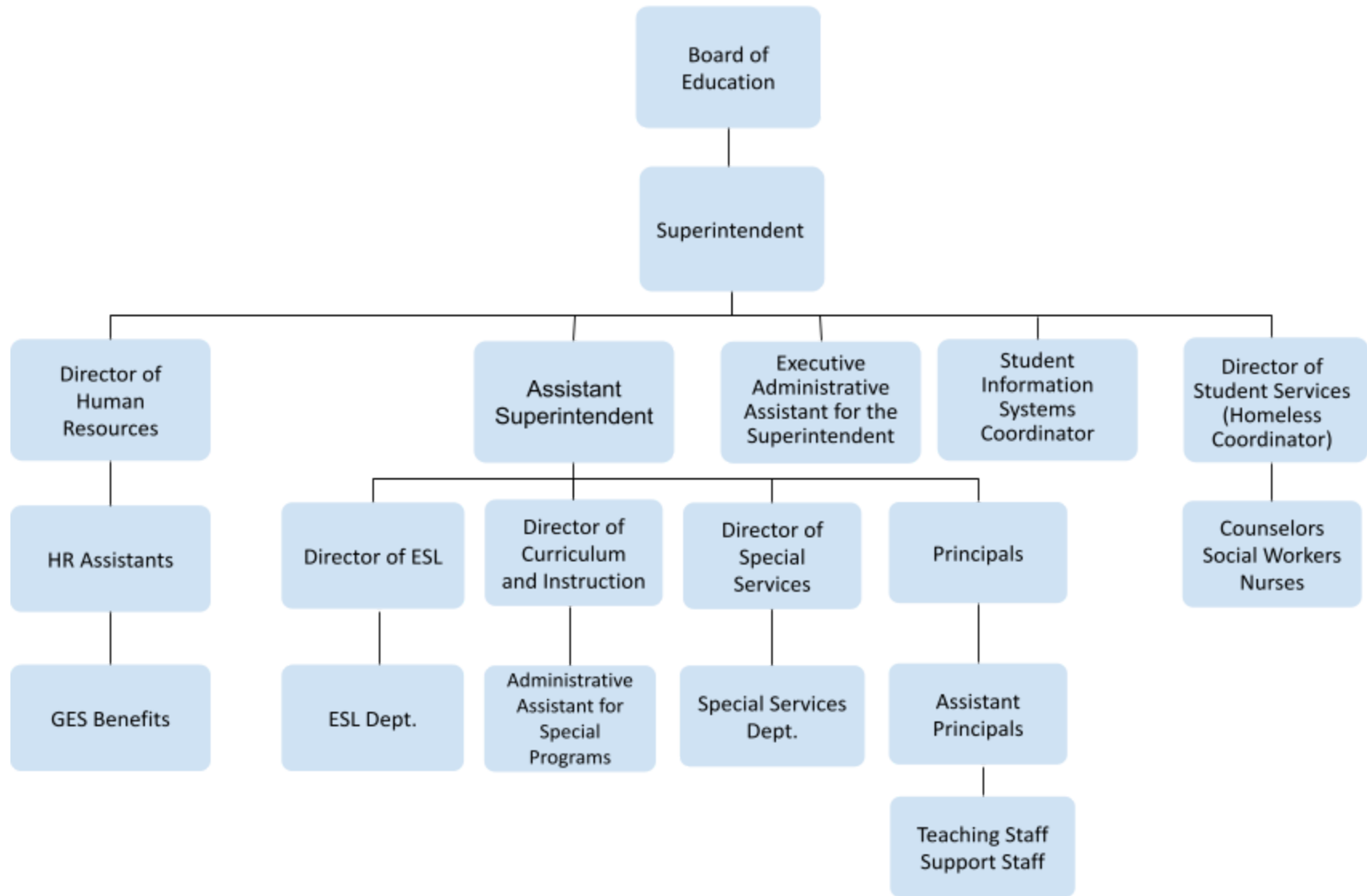


GES Educational Leadership Organizational Chart 2021-2022



*Superintendent **Joe Palmer**
 *Asst. Superintendent **Dr. Steve Lumetta**
 *Director of HR **Dr. Jim Hammen**
 *Director of C&I **Dr. Mike Wilhoit**

*Director of Student Services **Eduardo Mendez**
 *Director of Special Services **Charlotte Hawkins**
 *Director of ESL **Daisy Myrick**
 Executive Administrative Asst. Patricia Hernandez

SIS Coordinator Brandon Wright
 HR Assistant. Omar Fierros
 GES Benefits Specialist. Alyssa Weger

GCES Principal April Soberon
 GCMS Principal Claudia Meyer
 GCHS Principal Michael Meaney

*GES Administrative Cabinet Executive Management Team